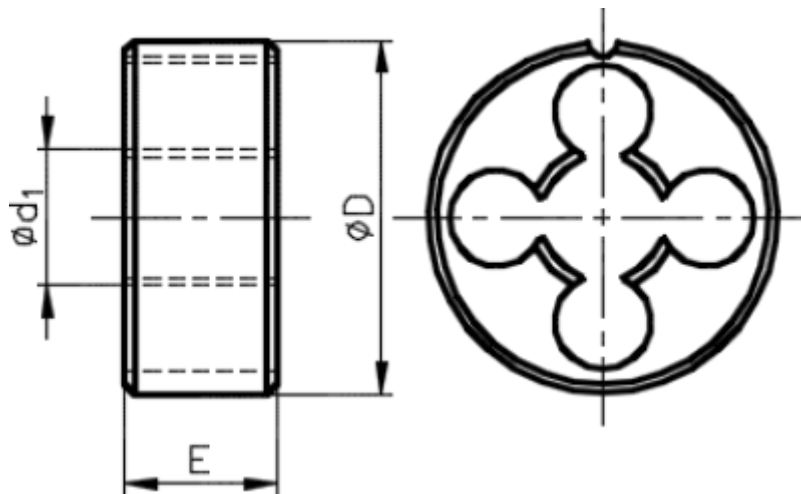


Circular screwing die with spiral pointed



CATALOGUE NUMBER: 9550

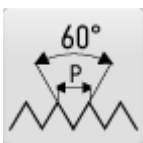
Circular screwing dies with spiral point, metric, DIN EN 22 568, suitable for structural steels, plain cast steels, free cutting steels, spheroidal graphite and malleable cast iron

M

THREAD M
ISO Metric coarse thread

MF

THREAD MF
ISO Metric fine thread



PROFILE SKETCH
60°

**DIN
13**

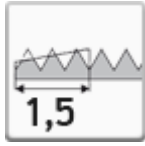
THREAD STANDARD
DIN13

typ
N

TYPE N
Tap for steels up to 800 N/mm²

HSS

TAP MATERIAL
High speed steel HSS

**DIN EN
22 568**CIRCULAR SCREWING DIES NORM
DIN EN 22 568**ISO
6g**THREAD TOLERANCE
ISO - 6g**CHAMFER**
Length 1,5 pitch

Select product model

ID	D1	P	Tolerance	Z	D	e	Price excl. VAT	Price incl. VAT
141132150020000	M2	0,4	6g		16	5	10.20 EUR	12.34 EUR
141132150025000	M2,5	0,45	6g		16	5	10.20 EUR	12.34 EUR
141132150030000	M3	0,5	6g		20	5	9.00 EUR	10.89 EUR
141132150040000	M4	0,7	6g		20	5	8.55 EUR	10.35 EUR
141132150050000	M5	0,8	6g		20	7	8.55 EUR	10.35 EUR
141132150060000	M6	1	6g		20	7	8.55 EUR	10.35 EUR
141132150068000	M6	0,75	6g		20	7	11.00 EUR	13.31 EUR
141132150070000	M7	1	6g		25	9	9.60 EUR	11.62 EUR
141132150080000	M8	1,25	6g		25	9	8.80 EUR	10.65 EUR
141132150087000	M8	1	6g		25	9	11.40 EUR	13.79 EUR
141132150088000	M8	0,75	6g		25	9	11.40 EUR	13.79 EUR
141132150090000	M9	1,25	6g		25	9	10.20 EUR	12.34 EUR
141132150100000	M10	1,5	6g		30	11	10.20 EUR	12.34 EUR
141132150106000	M10	1,25	6g		30	11	13.15 EUR	15.91 EUR
141132150107000	M10	1	6g		30	11	13.15 EUR	15.91 EUR
141132150110000	M11	1,5	6g		30	11	14.55 EUR	17.61 EUR
141132150120000	M12	1,75	6g		38	14	15.20 EUR	18.39 EUR
141132150125000	M12	1,5	6g		38	10	18.85 EUR	22.81 EUR
141132150126000	M12	1,25	6g		38	10	18.85 EUR	22.81 EUR
141132150127000	M12	1	6g		38	10	18.85 EUR	22.81 EUR
141132150140000	M14	2	6g		38	14	15.85 EUR	19.18 EUR

ID	D1	P	Tolerance	Z	D	e	Price excl. VAT	Price incl. VAT
141132150145000	M14	1,5	6g		38	10	19.50 EUR	23.60 EUR
141132150146000	M14	1,25	6g		38	10	19.50 EUR	23.60 EUR
141132150147000	M14	1	6g		38	10	19.50 EUR	23.60 EUR
141132150160000	M16	2	6g		45	18	22.25 EUR	26.92 EUR
141132150165000	M16	1,5	6g		45	14	27.50 EUR	33.28 EUR
141132150167000	M16	1	6g		45	14	27.50 EUR	33.28 EUR
141132150180000	M18	2,5	6g		45	18	22.50 EUR	27.23 EUR
141132150184000	M18	2	6g		45	14	27.80 EUR	33.64 EUR
141132150185000	M18	1,5	6g		45	14	27.80 EUR	33.64 EUR
141132150200000	M20	2,5	6g		45	18	23.45 EUR	28.37 EUR
141132150205000	M20	1,5	6g		45	14	29.00 EUR	35.09 EUR
141132150207000	M20	1	6g		45	14	29.00 EUR	35.09 EUR
141132150220000	M22	2,5	6g		55	22	32.70 EUR	39.57 EUR
141132150224000	M22	2	6g		55	16	40.50 EUR	49.01 EUR
141132150225000	M22	1,5	6g		55	16	40.50 EUR	49.01 EUR
141132150227000	M22	1	6g		55	16	40.50 EUR	49.01 EUR
141132150240000	M24	3	6g		55	22	36.65 EUR	44.35 EUR
141132150244000	M24	2	6g		55	16	45.40 EUR	54.93 EUR
141132150245000	M24	1,5	6g		55	16	45.40 EUR	54.93 EUR
141132150247000	M24	1	6g		55	16	45.40 EUR	54.93 EUR
141132150270000	M27	3	6g		65	25	46.05 EUR	55.72 EUR
141132150300000	M30	3,5	6g		65	25	48.95 EUR	59.23 EUR
141132150330000	M33	3,5	6g		65	25	50.75 EUR	61.41 EUR
141132150360000	M36	4	6g		65	25	52.80 EUR	63.89 EUR

Use

MACHINED MATERIAL	HOLE TYPE	CUTTING SPEED	LUBRICATION	USE
Free cutting steels up to 800 N/mm ²	-	3-5	Cutting Oil/Emulsion	Recommended use
Plain cast steels up to 500 N/mm ²	-	4-8	Cutting Oil/Emulsion	Recommended use
Plain cast steels up to 800 N/mm ²	-	3-5	Cutting Oil/Emulsion	Recommended use
Spheroidal graphite cast iron and malleable cast iron	-	3-5	Cutting Oil/Emulsion	Recommended use
Structural steels and heat-treated steels up to 800 N/mm ²	-	3-5	Cutting Oil/Emulsion	Recommended use
Structural steels up to 500 N/mm ²	-	4-8	Cutting Oil/Emulsion	Recommended use

NAREX Ždánice, spol. s r.o.

Městečko 250
696 32 Ždánice, Česká republika

Tel.: +420 518 607 111
Fax: +420 518 607 153
E-mail: sales@narexzd.cz
Web: www.narexzd.cz