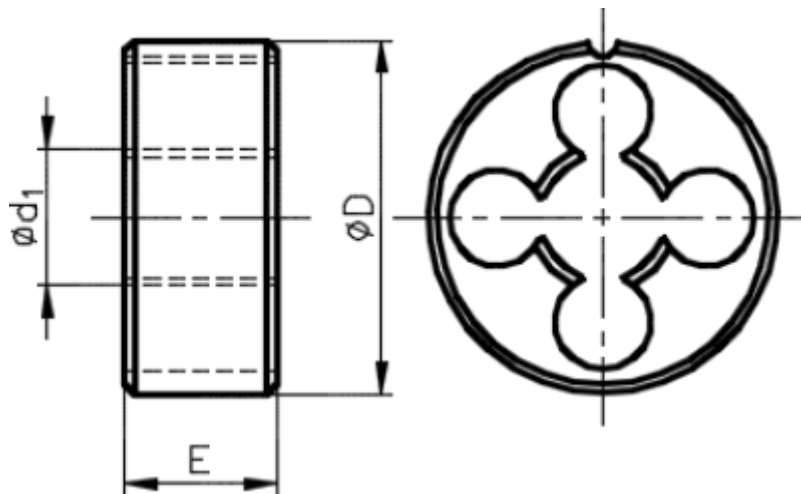


# Circular screwing die

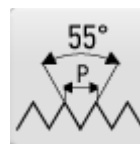


## CATALOGUE NUMBER: 9501

Circular screwing dies, british standard whitworth thread, DIN EN 22 568, for structural steels, plain cast steels, free cutting steels



**THREAD BSW**  
Whitworth thread



**PROFILE SKETCH**  
55°



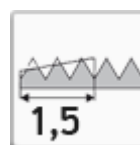
**TYPE N**  
Tap for steels up to 800 N/mm<sup>2</sup>



**TAP MATERIAL**  
High speed steel HSS



**CIRCULAR SCREWING DIES NORM**  
DIN EN 22 568



**CHAMFER**  
Length 1,5 pitch

# Select product model

ID	D1	P	Tolerance	Z	D	e	Price excl. VAT	Price incl. VAT
141132120005000	W3/16"	24			20	7	7.00 EUR	8.47 EUR
141132120007000	W1/4"	20			20	7	7.00 EUR	8.47 EUR
141132120009000	W5/16"	18			25	9	7.00 EUR	8.47 EUR
141132120011000	W3/8"	16			30	11	8.80 EUR	10.65 EUR
141132120012000	W7/16"	14			30	11	11.55 EUR	13.98 EUR
141132120013000	W1/2"	12			38	14	14.05 EUR	17.00 EUR
141132120014000	W9/16"	12			38	14	14.20 EUR	17.18 EUR
141132120015000	W5/8"	11			45	18	18.65 EUR	22.57 EUR
141132120017000	W3/4"	10			45	18	19.65 EUR	23.78 EUR
141132120019000	W7/8"	9			55	22	29.45 EUR	35.63 EUR
141132120021000	W1"	8			55	22	30.60 EUR	37.03 EUR

## Use

MACHINED MATERIAL	HOLE TYPE	CUTTING SPEED	LUBRICATION	USE
Free cutting steels up to 800 N/mm <sup>2</sup>	-	3-5	Cutting Oil/Emulsion	Recommended use
Plain cast steels up to 500 N/mm <sup>2</sup>	-	4-8	Cutting Oil/Emulsion	Recommended use
Plain cast steels up to 800 N/mm <sup>2</sup>	-	3-5	Cutting Oil/Emulsion	Recommended use
Spheroidal graphite cast iron and malleable cast iron	-	3-5	Cutting Oil/Emulsion	Recommended use
Structural steels and heat-treated steels up to 800 N/mm <sup>2</sup>	-	3-5	Cutting Oil/Emulsion	Recommended use
Structural steels up to 500 N/mm <sup>2</sup>	-	4-8	Cutting Oil/Emulsion	Recommended use

**NAREX Ždánice, spol. s r.o.**

Městečko 250  
696 32 Ždánice, Česká republika

Tel.: +420 518 607 111  
Fax: +420 518 607 153  
E-mail: [sales@narexzd.cz](mailto:sales@narexzd.cz)  
Web: [www.narexzd.cz](http://www.narexzd.cz)